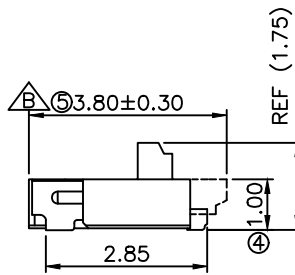
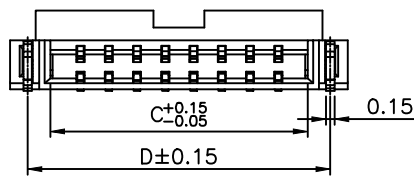
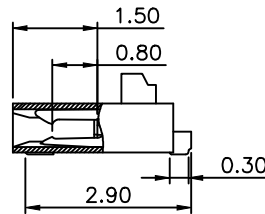
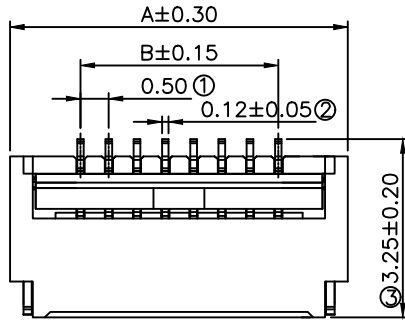


| REV | DESCRIPTION | DATE |
|-----|-------------|------|
|     |             |      |

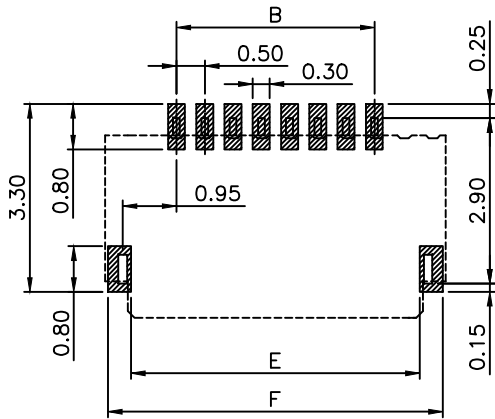


NOTE:

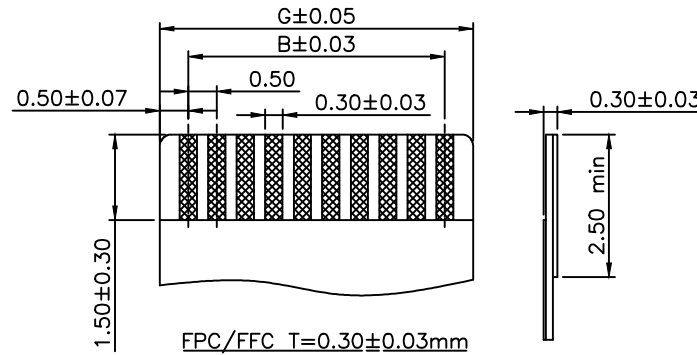
- MATERIAL  
HOUSING:HIGH-TEMP. THERMOPLASTIC, UL 94V-0.  
CONTACT:COPPER ALLOY.  
PLATING:TIN OR GOLD PLATED OVER NICKEL.  
HOLDDOWN:COPPER ALLOY.  
PLATING:TIN OR GOLD PLATED OVER NICKEL.
- PART NO.  
CNT-FPC050-XX-TDM-D30-100

■ DIMENSIONAL INFORMATION

| No.of Contacts | DIM. A | DIM. B | DIM. C | DIM. D | DIM. E | DIM. F | DIM. G |
|----------------|--------|--------|--------|--------|--------|--------|--------|
| 04             | 4.0    | 1.5    | 2.57   | 3.38   | 3.1    | 3.9    | 2.5    |
| 05             | 4.5    | 2.0    | 3.07   | 3.88   | 3.6    | 4.4    | 3.0    |
| 06             | 5.0    | 2.5    | 3.57   | 4.38   | 4.1    | 4.9    | 3.5    |
| 07             | 5.5    | 3.0    | 4.07   | 4.88   | 4.6    | 5.4    | 4.0    |
| 08             | 6.0    | 3.5    | 4.57   | 5.38   | 5.1    | 5.9    | 4.5    |
| 09             | 6.5    | 4.0    | 5.07   | 5.88   | 5.6    | 6.4    | 5.0    |
| 10             | 7.0    | 4.5    | 5.57   | 6.38   | 6.1    | 6.9    | 5.5    |
| 11             | 7.5    | 5.0    | 6.07   | 6.88   | 6.6    | 7.4    | 6.0    |
| 12             | 8.0    | 5.5    | 6.57   | 7.38   | 7.1    | 7.9    | 6.5    |
| 13             | 8.5    | 6.0    | 7.07   | 7.88   | 7.6    | 8.4    | 7.0    |
| 14             | 9.0    | 6.5    | 7.57   | 8.38   | 8.1    | 8.9    | 7.5    |
| 15             | 9.5    | 7.0    | 8.07   | 8.88   | 8.6    | 9.4    | 8.0    |
| 16             | 10.0   | 7.5    | 8.57   | 9.38   | 9.1    | 9.9    | 8.5    |
| 17             | 10.5   | 8.0    | 9.07   | 9.88   | 9.6    | 10.4   | 9.0    |
| 18             | 11.0   | 8.5    | 9.57   | 10.38  | 10.1   | 10.9   | 9.5    |
| 19             | 11.5   | 9.0    | 10.07  | 10.88  | 10.6   | 11.4   | 10.0   |
| 20             | 12.0   | 9.5    | 10.57  | 11.38  | 11.1   | 11.9   | 10.5   |
| 21             | 12.5   | 10.0   | 11.07  | 11.88  | 11.6   | 12.4   | 11.0   |
| 22             | 13.0   | 10.5   | 11.57  | 12.38  | 12.1   | 12.9   | 11.5   |
| 23             | 13.5   | 11.0   | 12.07  | 12.88  | 12.6   | 13.4   | 12.0   |
| 24             | 14.0   | 11.5   | 12.57  | 13.38  | 13.1   | 13.9   | 12.5   |
| 25             | 14.5   | 12.0   | 13.07  | 13.88  | 13.6   | 14.4   | 13.0   |
| 26             | 15.0   | 12.5   | 13.57  | 14.38  | 14.1   | 14.9   | 13.5   |
| 27             | 15.5   | 13.0   | 14.07  | 14.88  | 14.6   | 15.4   | 14.0   |
| 28             | 16.0   | 13.5   | 14.57  | 15.38  | 15.1   | 15.9   | 14.5   |
| 29             | 16.5   | 14.0   | 15.07  | 15.88  | 15.6   | 16.4   | 15.0   |
| 30             | 17.0   | 14.5   | 15.57  | 16.38  | 16.1   | 16.9   | 15.5   |
| 31             | 17.5   | 15.0   | 16.07  | 16.88  | 16.6   | 17.4   | 16.0   |
| 32             | 18.0   | 15.5   | 16.57  | 17.38  | 17.1   | 17.9   | 16.5   |
| 33             | 18.5   | 16.0   | 17.07  | 17.88  | 17.6   | 18.4   | 17.0   |
| 34             | 19.0   | 16.5   | 17.57  | 18.38  | 18.1   | 18.9   | 17.5   |
| 35             | 19.5   | 17.0   | 18.07  | 18.88  | 18.6   | 19.4   | 18.0   |
| 36             | 20.0   | 17.5   | 18.57  | 19.38  | 19.1   | 19.9   | 18.5   |
| 37             | 20.5   | 18.0   | 19.07  | 19.88  | 19.6   | 20.4   | 19.0   |
| 38             | 21.0   | 18.5   | 19.57  | 20.38  | 20.1   | 20.9   | 19.5   |
| 39             | 21.5   | 19.0   | 20.07  | 20.88  | 20.6   | 21.4   | 20.0   |
| 40             | 22.0   | 19.5   | 20.57  | 21.38  | 21.1   | 21.9   | 20.5   |
| 41             | 22.5   | 20.0   | 21.07  | 21.88  | 21.6   | 22.4   | 21.0   |
| 42             | 23.0   | 20.5   | 21.57  | 22.38  | 22.1   | 22.9   | 21.5   |
| 43             | 23.5   | 21.0   | 22.07  | 22.88  | 22.6   | 23.4   | 22.0   |
| 44             | 24.0   | 21.5   | 22.57  | 23.38  | 23.1   | 23.9   | 22.5   |
| 45             | 24.5   | 22.0   | 23.07  | 23.88  | 23.6   | 24.4   | 23.0   |
| 46             | 25.0   | 22.5   | 23.57  | 24.38  | 24.1   | 24.9   | 23.5   |
| 47             | 25.5   | 23.0   | 24.07  | 24.88  | 24.6   | 25.4   | 24.0   |
| 48             | 26.0   | 23.5   | 24.57  | 25.38  | 25.1   | 25.9   | 24.5   |
| 49             | 26.5   | 24.0   | 25.07  | 25.88  | 25.6   | 26.4   | 25.0   |
| 50             | 27.0   | 24.5   | 25.57  | 26.38  | 26.1   | 26.9   | 25.5   |



RECOMMENDED PCB LAYOUT



|                             |         |           |                      |             |               |                           |   |
|-----------------------------|---------|-----------|----------------------|-------------|---------------|---------------------------|---|
| <p><b>CNT</b> 肯耐特电子有限公司</p> |         |           | GENERAL TOLERANCE    | DRAWN 董道丽   | DATE 20191011 | DWG. NO.                  | TITLE   |
|                             |         |           | X.° ±5° X. ±0.30     | CHECK 王芳芳   | DATE 20191011 | PART. NO.                 |   |
| REV. 1.0                    | UNIT mm | SCALE 1:1 | .XX° ±2° .XX ±0.25   | APPROVE 王元中 | DATE 20191011 | CNT-FPC050-XX-TDM-D30-100 | FPC pitch 0.5mm 双面接触 前插后锁 掀盖式SMT90度 (H=1.0mm) |
|                             |         |           | .XXX° ±1° .XXX ±0.15 |             |               |                           |   |